

research informing policy: how to make an impact

Mieke Koehoorn

<http://spph.ubc.ca/person/mieke-koehoorn/>

Partnership for Work, Health and Safety
School of Population and Public Health
University of British Columbia

the point of the lecture

- anatomy of a partnership
- physiology of data access
- art and science of policy impact
- applauding the architects of policy partnerships and data access models



in a nutshell....key messages

- research-policy partnership is like a common-law union
- big (local) data matters for policy impact and innovation in research
- interactive models of research-policy relationship and research-use models for policy impact (*Weiss C, Bowen S, Lomas J, Lavis J et al*)

backdrop

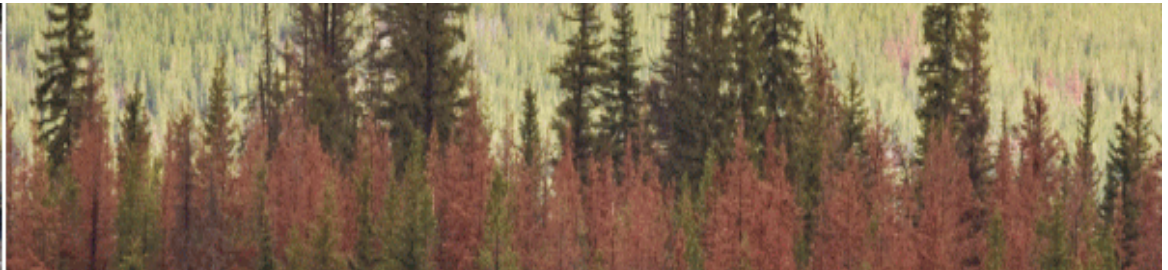
Partnership for Work, Health and Safety

www.pwhs.ubc.ca

 @PWHS_UBC



WORKING TO MAKE A DIFFERENCE



backdrop



<https://www.popdata.bc.ca>



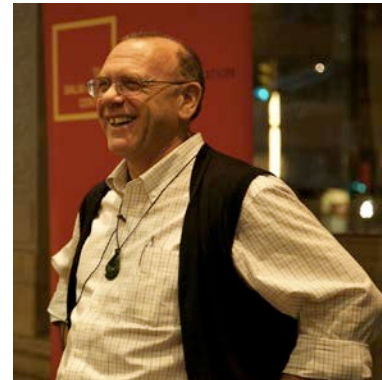
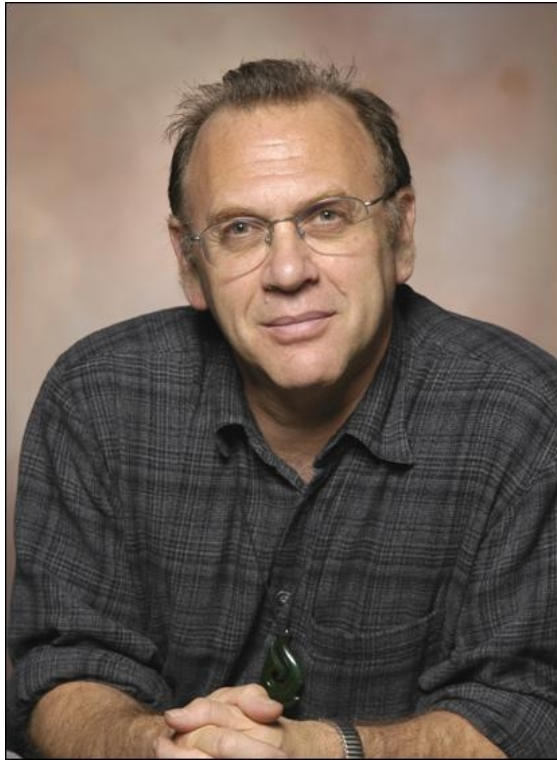
2014

International
**Health Data Linkage
Conference**

28-30 April 2014
Vancouver, Canada

<http://www.ihdlconference2014.org>

clyde hertzman...applauding the architect



in the beginning....

proof of concept for research-policy partnership and
public-utility data access model

FOR THE COMMON GOOD



FINAL REPORT OF THE ROYAL COMMISSION
ON WORKERS' COMPENSATION IN
BRITISH COLUMBIA



Use by Injured Workers in the British Columbia
Cohort *Clyde Hertzman, Kimberlyn McGrail, Bob Hirtle*

ial Welfare

†1

Do not underestimate the importance of the proof of concept phase and the
need to invest resources to build and maintain a productive policy partnership

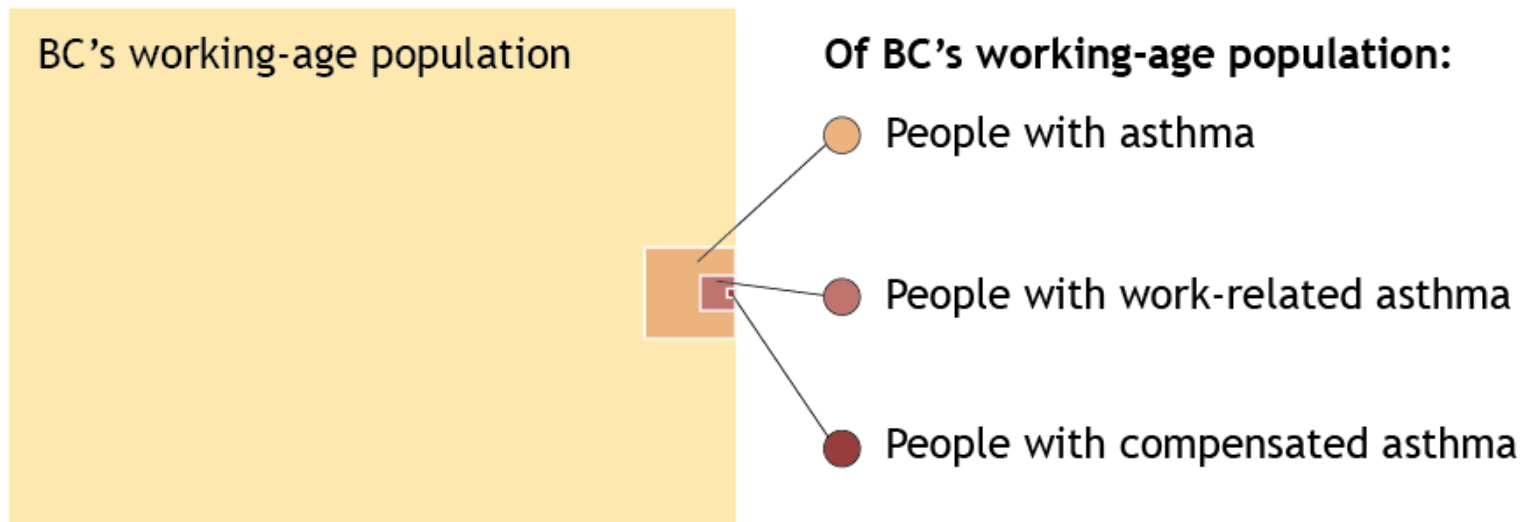
credit to research team



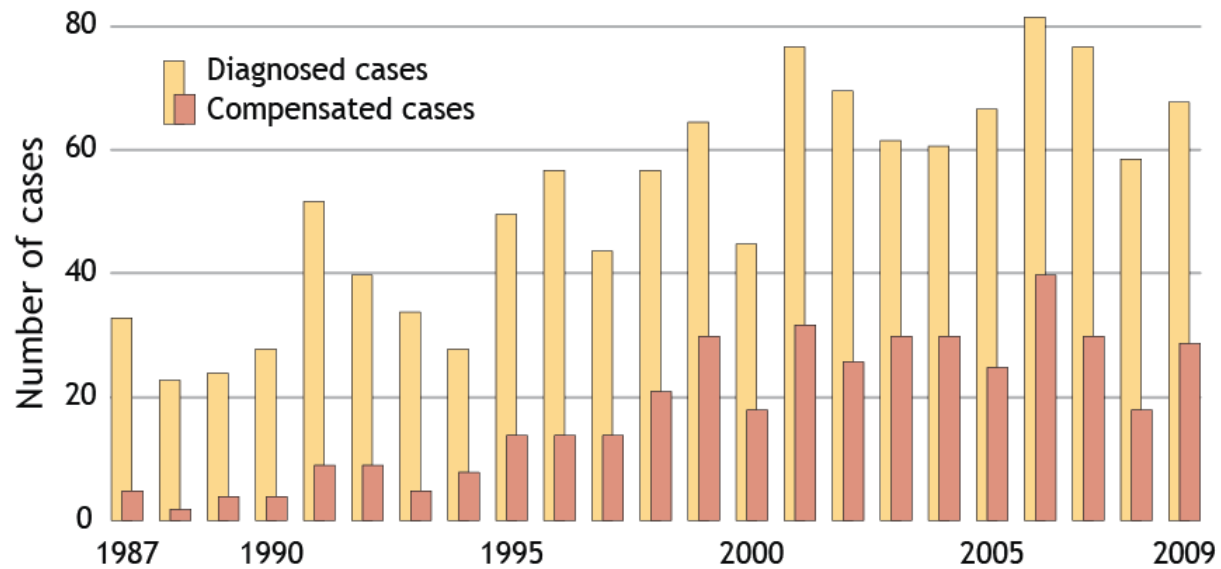
A word cloud of researcher names, including: Jones, Nath Quirke, KMcLeod, FanKling, McGrail, Koehoorn, Demers, Mooney, Wong, Kirkham, Arrandale, CBMcLeod, Edeer, Chhokar, Tamburic, Hertzman, Xu, Sarkany, Marino, Barer, and Gan.

examples of research having an impact....

work-related asthma

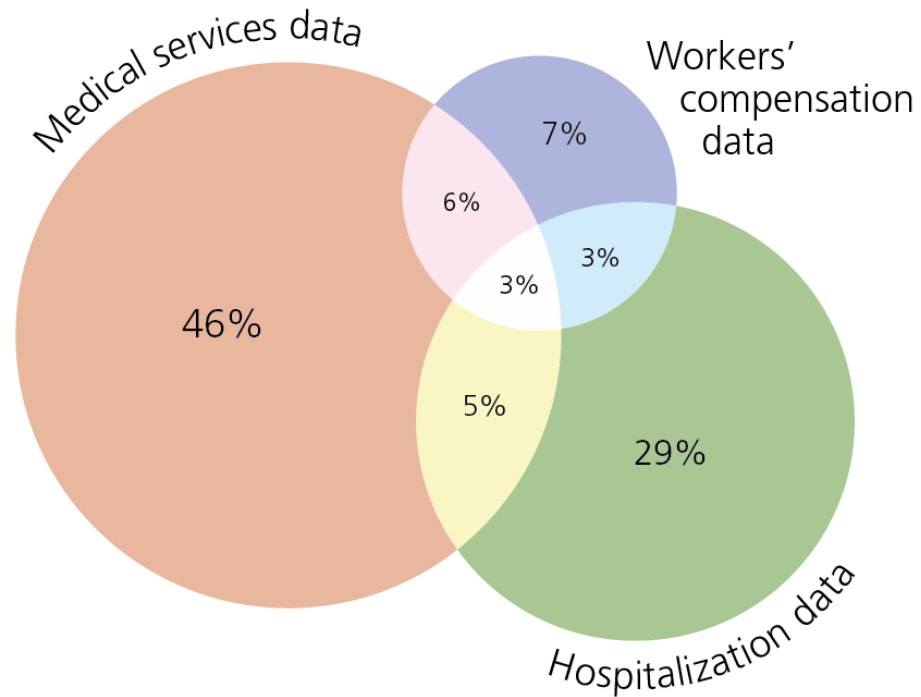


mesothelioma



<http://pwhs.ubc.ca/research/policy-and-program-evaluation/mesothelioma-awareness-and-compensation/>

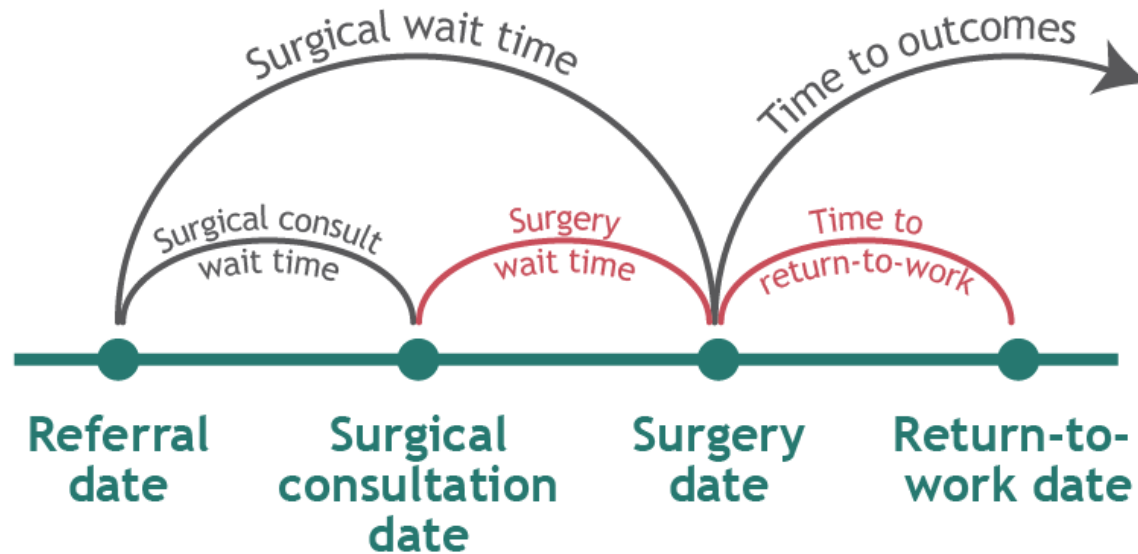
asbestosis



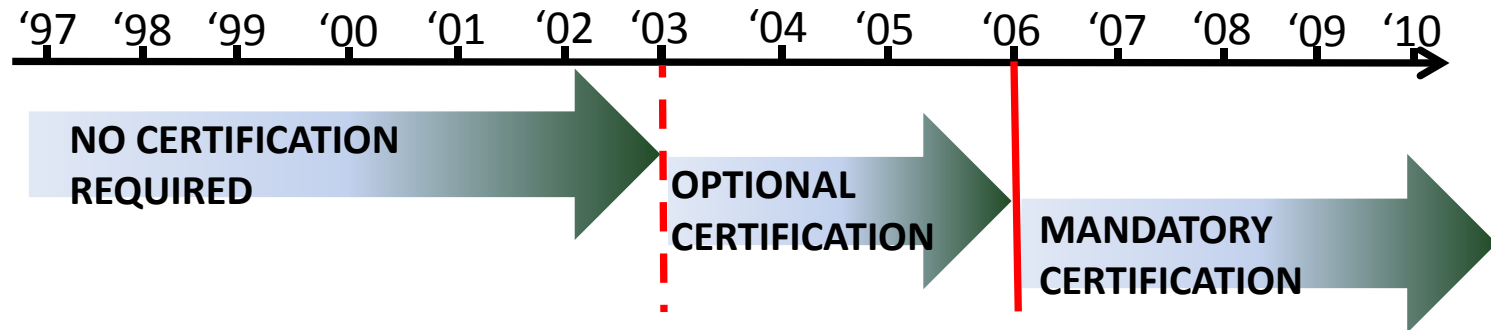
what we learned at this stage....

- early adopters critical to success of innovative partnership
- evidence within local context persuasive
- a picture paints a thousand (policy) words
- overcome unease with inherent uncertainty in research to provide timely evidence

wait times and surgical settings



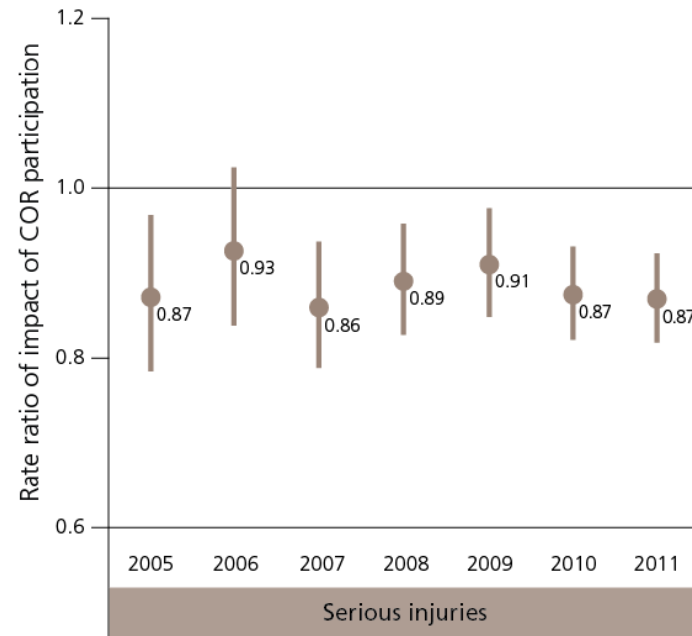
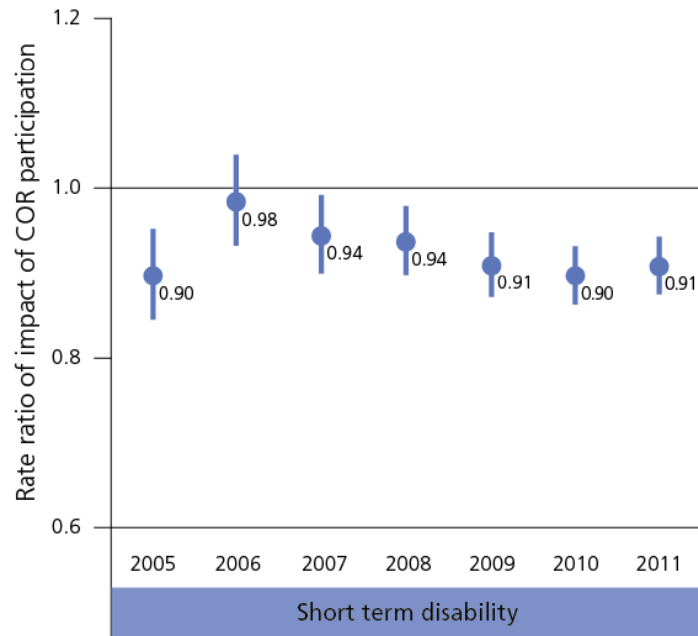
tree-faller certification



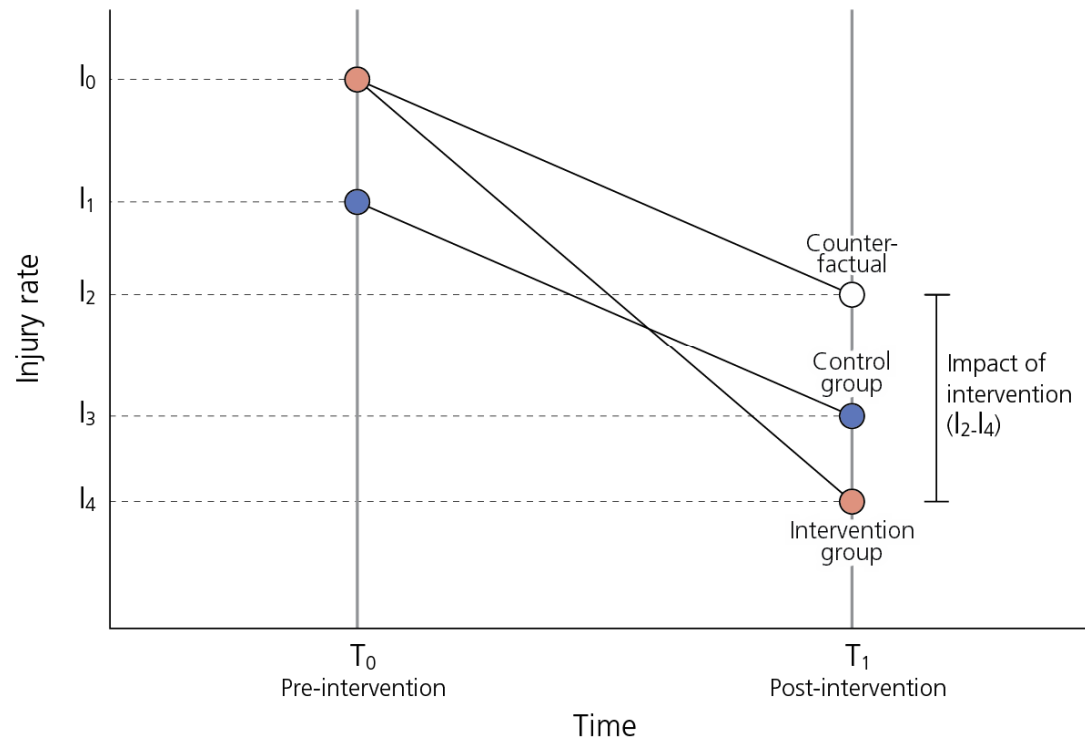
what we learned at this stage....

- responding to key knowledge and policy needs
- accessing sensitive data in secure, confidential and privacy-protected manner
- recognizing challenges of releasing findings...only after internal review
- different uses of research in policy-making with different definitions of impact

certificate of recognition (*McLeod CB et al*)



workplace inspections *(McLeod K, McLeod CB et al)*



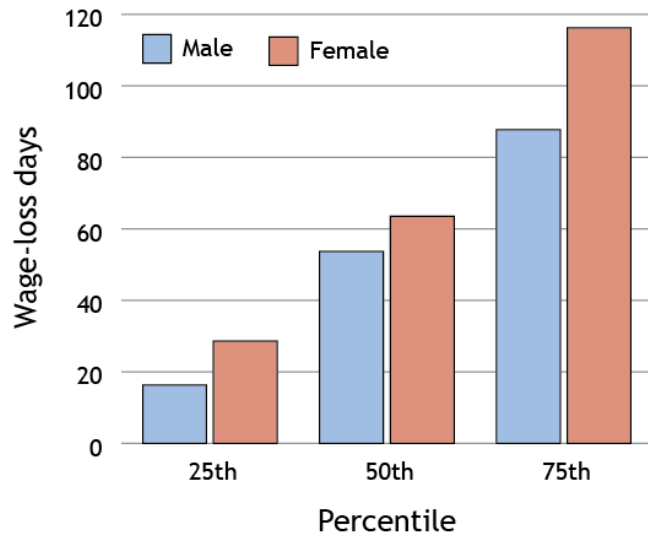
<http://pwhr.sites.olt.ubc.ca/files/2013/10/Inspections-presentation-WorkSafeBC-Sept-2013.pdf>
<http://pwhs.ubc.ca/research/policy-and-program-evaluation/health-and-safety-programs-and-regulations/>

national and international comparative research (*McLeod CB, Collie A et al*)

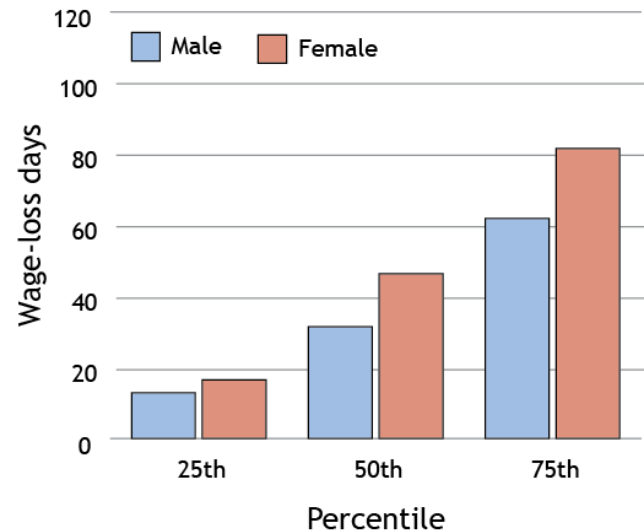
<http://pwhs.ubc.ca/research/policy-and-program-evaluation/national-and-international-comparative-research/>

the difference gender makes

Fractures in nursing



Fractures in processing, manufacturing and utilities



what we learned at this stage....

- capacity to act on evidence is about networks...*different people at the table at different points in time*
- innovation in research at trusted phase of partnership

data access models for the public good...

www.popdata.bc.ca

 Health care & health services	 Population & demographic	 Occupational & environmental	 Early childhood & education
<p>Medical Services Plan (BC Ministry of Health)</p> <p>PharmaCare (BC Ministry of Health)</p> <p>Hospital Separations (BC Ministry of Health)</p> <p>Home & Community Care (BC Ministry of Health)</p> <p>Mental Health (BC Ministry of Health)</p> <p>Registry Data (BC Cancer Agency)</p>	<p>Consolidation File (MSP Registration & Premium Billing) (BC Ministry of Health)</p> <p>Births (BC Vital Statistics Agency)</p> <p>Stillbirths (BC Vital Statistics Agency)</p> <p>Marriages (BC Vital Statistics Agency)</p> <p>Deaths (BC Vital Statistics Agency)</p> <p>Cadastral Data (Integrated Cadastral Information Society)</p>	<p>WorkSafeBC Claim Files (WorkSafeBC)</p> <p>WorkSafeBC Firm Level Data (WorkSafeBC)</p>	<p>Early Development Instrument (HELP)</p> <p>Middle Years Development Instrument (HELP)</p>
<p><i>Perinatal Services</i></p> <p><i>Canadian Community Health Survey</i></p> <p><i>Cardiac Services BC</i></p> <p><i>BC Ambulance</i></p> <p><i>College of Physicians & Surgeons BC</i></p>	<p><i>Citizenship & Immigration Canada</i></p>	<p><i>WorkSafeBC Exposure Data BC Assessment</i></p>	<p><i>Children in Care</i></p> <p><i>Child Protection</i></p> <p><i>Childcare Licensing</i></p> <p><i>BC K-12 Student Standard Testing</i></p> <p><i>School & District</i></p>

partnerships based on interactive model

(Lavis J, Lomas J, Weiss C et al)

Health Safety Evaluation
Surveillance **Work** Data Policy
Occupational **Administrative**
Databases
Privacy Knowledge **Injury**

- *ongoing and prolonged interaction between researchers and the policy-makers to generate evidence to impact decisions*
- *recognize the different types of impact that research evidence can have on policy and decision making*

Partnership for Work, Health and Safety

www.pwhs.ubc.ca

 @PWHS_UBC



a place of mind